

DCBLD2 Antibody (C-term)
Affinity Purified Rabbit Polyclonal Antibody (Pab)
Catalog # AP13827b

Specification

DCBLD2 Antibody (C-term) - Product Information

Application	FC, WB,E
Primary Accession	O96PD2
Other Accession	NP_563615.3
Reactivity	Human, Mouse
Host	Rabbit
Clonality	Polyclonal
Isotype	Rabbit IgG
Antigen Region	538-567

DCBLD2 Antibody (C-term) - Additional Information

Gene ID 131566

Other Names

Discoidin, CUB and LCCL domain-containing protein 2, CUB, LCCL and coagulation factor V/VIII-homology domains protein 1, Endothelial and smooth muscle cell-derived neuropilin-like protein, DCBLD2, CLCP1, ESDN

Target/Specificity

This DCBLD2 antibody is generated from rabbits immunized with a KLH conjugated synthetic peptide between 538-567 amino acids from the C-terminal region of human DCBLD2.

Dilution

FC~~1:10~50

WB~~1:1000

E~~Use at an assay dependent concentration.

Format

Purified polyclonal antibody supplied in PBS with 0.09% (W/V) sodium azide. This antibody is purified through a protein A column, followed by peptide affinity purification.

Storage

Maintain refrigerated at 2-8°C for up to 2 weeks. For long term storage store at -20°C in small aliquots to prevent freeze-thaw cycles.

Precautions

DCBLD2 Antibody (C-term) is for research use only and not for use in diagnostic or therapeutic procedures.

DCBLD2 Antibody (C-term) - Protein Information

Name DCBLD2

Synonyms CLCP1, ESDN

Cellular Location

Membrane; Single- pass type I membrane protein

Tissue Location

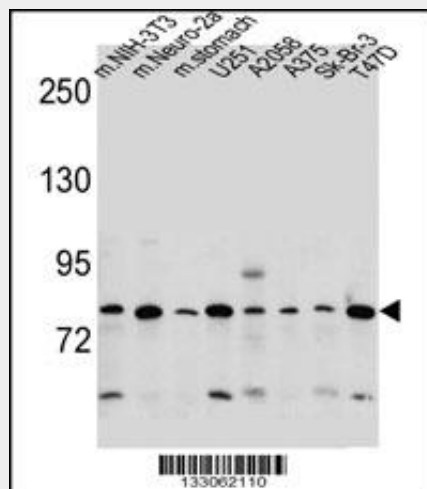
Highly expressed in testis, heart, skeletal muscle and also in cultured vascular smooth muscle cells

DCBLD2 Antibody (C-term) - Protocols

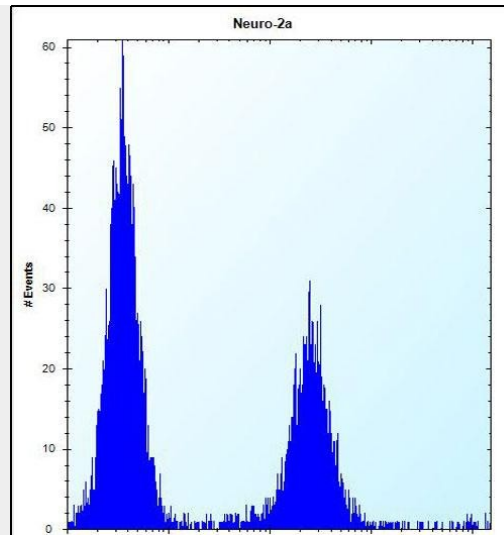
Provided below are standard protocols that you may find useful for product applications.

- [Western Blot](#)
- [Blocking Peptides](#)
- [Dot Blot](#)
- [Immunohistochemistry](#)
- [Immunofluorescence](#)
- [Immunoprecipitation](#)
- [Flow Cytometry](#)
- [Cell Culture](#)

DCBLD2 Antibody (C-term) - Images



DCBLD2 Antibody (C-term) (Cat. #AP13827b) western blot analysis in mouse NIH-3T3, Neuro-2a cell line and mouse stomach tissue and U251, A2058, A375, Sk-BR-3, T47D cell line lysates (35ug/lane). This demonstrates the DCBLD2 antibody detected the DCBLD2 protein (arrow).



DCBLD2 Antibody (C-term) (Cat. #AP13827b) flow cytometric analysis of Neuro-2a cells (right histogram) compared to a negative control cell (left histogram). FITC-conjugated donkey-anti-rabbit secondary antibodies were used for the analysis.

DCBLD2 Antibody (C-term) - Background

DCBLD2, otherwise known as ESDN (endothelial and smooth muscle cell-derived neuropilin-like molecule) is a novel type-I transmembrane protein with the longest cleavable secretory signal sequence among eukaryotes. It is expressed in various tissues; particularly highly expressed in cultured vascular smooth muscle cells. DCBLD2 is considered to play a role in regulation of vascular cell growth and may have a wide variety of functions in other tissues including the nervous system, like neuropilins.

DCBLD2 Antibody (C-term) - References

Rose, J. Phd, et al. Mol. Med. (2010) In press :
Guo, X., et al. J. Biol. Chem. 284(43):29376-29382(2009)
Marroni, F., et al. Circ Cardiovasc Genet 2(4):322-328(2009)
Kim, M., et al. Mol. Cancer Res. 6(2):222-230(2008)
Sadeghi, M.M., et al. Am. J. Transplant. 7(9):2098-2105(2007)